

# Erratum

## Erratum to “Conformation and packing of poly (diphenylphosphazene): the crystal structure of the $\alpha$ -form” [Polymer 43 (2002) 3093–3099]<sup>☆</sup>

E. Corradi, M.C. Gallazzi, G. Allegra, S.V. Meille\*

*Dipartimento di Chimica, Materiali e Ingegneria Chimica ‘G. Natta’, Politecnico di Milano, Via Mancinelli 7, 20131 Milan, Italy*

Received 6 September 2001; received in revised form 17 December 2001; accepted 14 January 2002

The publisher regrets that there were errors present in the published version of the above article. We apologise for any inconvenience or embarrassment caused (Figs. 1–4).

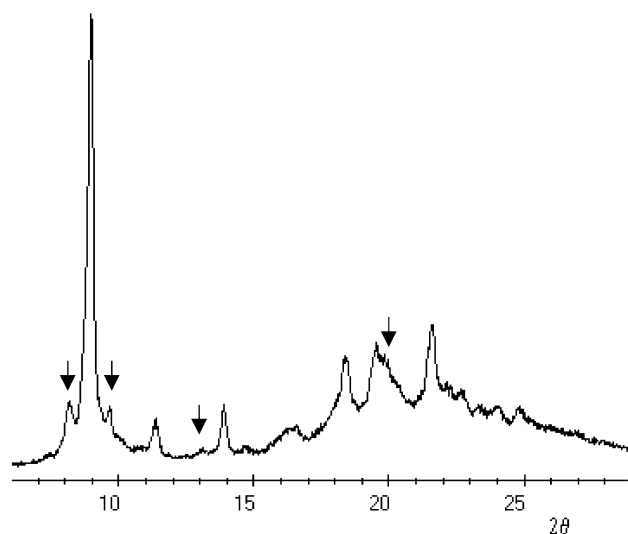


Fig. 1. X-ray diffraction pattern of an annealed sample of PDPhP, with evidence of  $\beta$  phase peaks (shown by arrows).

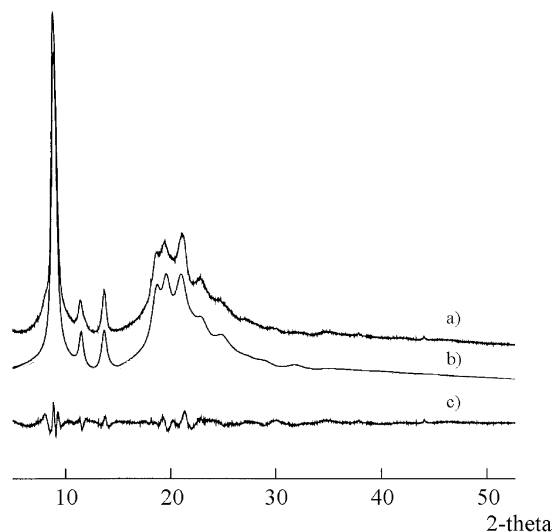


Fig. 2. X-ray diffraction pattern of PDPhP: (a) observed profile; (b) calculated profile; (c) difference curve.

<sup>☆</sup> doi of original article 10.1016/S0032-3861(02)00083-6

\* Corresponding author. Tel.: +39-2-2399-3021; fax: +39-2-2399-3080.

E-mail address: meille@dept.chem.polimi.it (S.V. Meille).

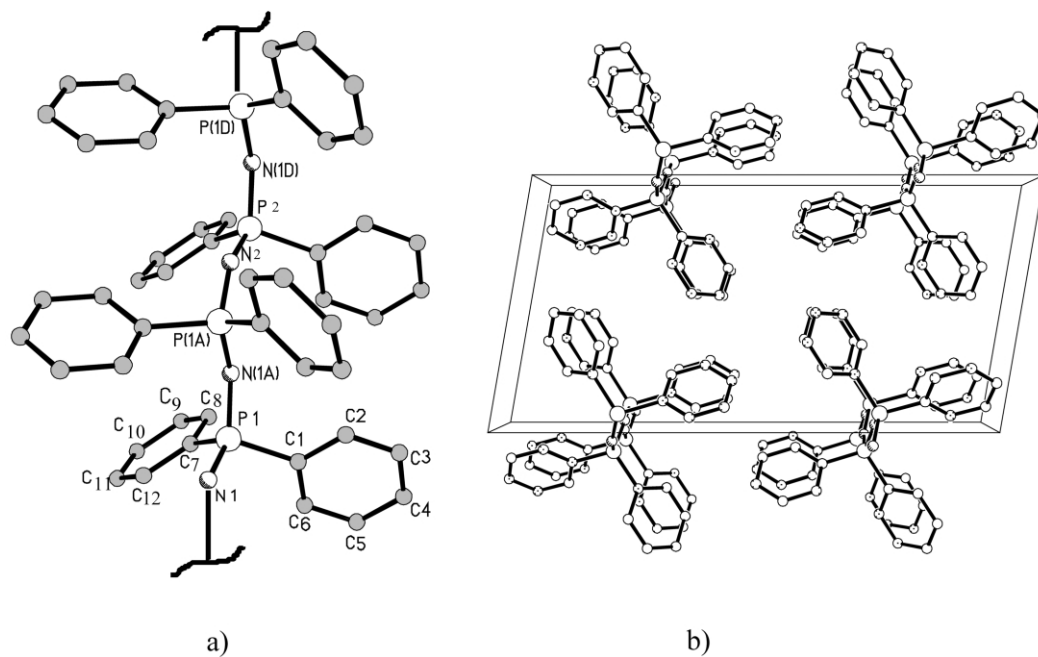


Fig. 3. Structure of PDPhP (a) and packing (b) viewed down the *c* axis.

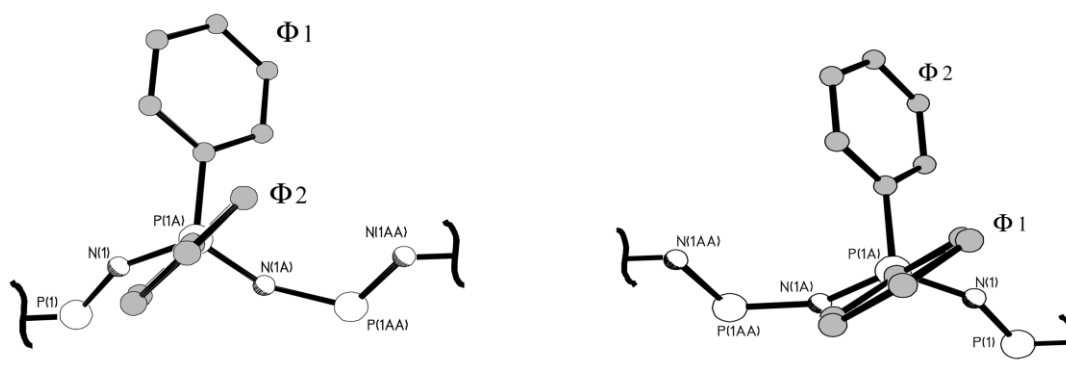


Fig. 4. Newman projection along the P–C bonds of the two phenyl rings.